

1950nm High Power Single mode Fiber optic Isolator(Suit for High Peak Power)



Description

The LD-PD'S PL- HPMI Series is High Power Polarization 2um Isolator. This is one High power fiber optic components we special design for Ultra short pulse fiber laser. And now wavelength at 1950nm/2000nm is available. This Unit Can handle maximum average power at 10w, Peak power at 10KW. We can help Customize according to Customer's Requirements.

Features

- High Power Stability
- Low Insertion Loss
- High Isolation
- High Extinction Ratio

Application

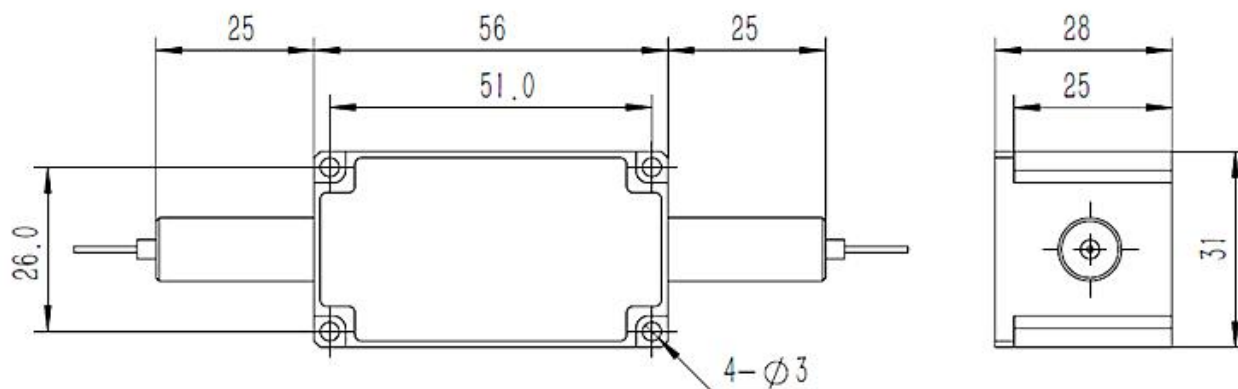
- Femto-second Fiber laser application
- Dense wavelength division multiplexing (DWDM)
- EDFAs for small package designs
- High power Fiber laser

Optical Characteristics

Tsub=25°C, CW bias unless stated otherwise

Parameter	Unit	Value
Center Wavelength (λ_c)	nm	1950
Operating Wavelength Range	nm	$\lambda_c \pm 10$
Min. Extinction Ratio	dB	20
Min. Isolation, 23 °C, all polarization states	dB	25
Max. Insertion Loss, 23 °C (Input to Output)	dB	0.6
Min. Return Loss (Input/Output)	dB	50/50
Max. Average Optical Power	W	10
Max. Peak Power for ns pulse	KW	20
Max. Tensile Load	N	5
Fiber Type		Specified by ordering info
Operating Temperature	°C	10 to +50
Storage Temperature	°C	0 to +60

Package Size



Unit: mm
Tolerance: X.± 1mm ; X.0 ± 0.2mm

Ordering Info

PL- HPMI-☆-A8▽-W□□□□-□□-□-XX (HPMIBP:MIR High power Version Isolator)

☆: Handling Power

A: 1W

B: 2W

C: 5W

D: 10W

E: Customize

▽: Working Mode

P: Pulse

C: Continuous wave

□□□□: Wavelength

850: 850nm

1030: 1030nm

1064: 1064nm

1550: 1550nm

1950: 1950nm

2000: 2000nm

□□: Fiber Jacket

B: Bare fiber

L: 900um Loose tube

C: Customize

□: Working axis

F: Fast axis alignment

S: Slow axis alignment

XX: Fiber and Connector Type

SMA= SMF-28E fiber + FC/APC

SMP= SMF-28E fiber + FC/APC

SA= SM1950 fiber+ None

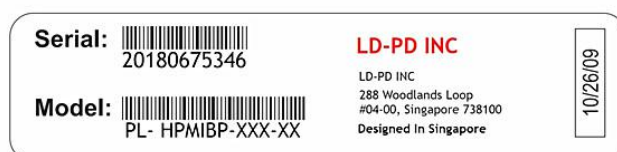
PP= PM 20/125 fiber + FC/PC

PA= PM 20/125 fiber + FC/AP

Labeling

Laser Components Safety

Due to the small size of the Fiber optic module, the box packaging is labeled with the laser radiation hazard symbol and safety warning labels shown below:



Shipping box label

Headquarters: 288, Woodlands Loop, #04-00, Singapore 738100

User Safety

Safety and Operating Considerations

The laser light emitted from this laser diode is invisible and may be harmful to the human eye. Avoid looking directly into the fiber when the device is in operation.

CAUTION: THE USE OF OPTICAL INSTRUMENTS WITH THIS PRODUCT INCREASES EYE HAZARD.

Operating the laser Components outside of its maximum ratings may cause device failure or a safety hazard. Power supplies used with this component cannot exceed maximum peak optical power.